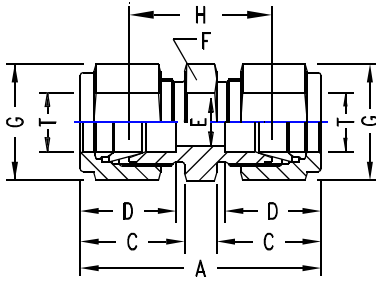


## UNION

### INCH OD Tubes



T Tube A OD	C	D	E min.	F A/F	G A/F	H	TU-LOK ..... Part No.	
1/16	25.1	11.0	8.6	1.3	8	8	17.5	1 SC
1/8	35.6	15.3	12.7	2.4	11	11	22.4	2 SC
1/4	40.9	17.8	15.3	4.8	14	14	26.2	4 SC
5/16	42.9	18.5	16.3	6.3	14	16	28.2	5 SC
3/8	45.0	19.3	16.8	7.1	16	17	30.2	6 SC
1/2	51.3	21.8	22.9	10.4	22	22	31.0	8 SC
5/8	52.0	21.8	24.4	12.7	24	25	31.8	10 SC
3/4	53.6	21.8	24.4	15.8	27	28.5	33.3	12 SC
7/8	55.2	21.8	25.9	18.2	30	32	34.8	14 SC
1	64.8	26.4	31.2	22.3	35	38	40.4	16 SC
1.1/4	92.2	38.9	41.2	27.6	46	50	48.0	20 SC
1.1/2	108.0	45.2	50.0	34.0	55	57	53.6	24 SC
2	149.4	62.7	67.6	46.0	70	76	74.7	32 SC

### METRIC OD Tubes

T Tube A OD	C	D	E min.	F A/F	G A/F	H	TU-LOK ..... Part No.	
3	35.3	15.3	12.9	2.4	11	11	22.1	SC-3
6	41.0	17.7	15.3	4.8	14	14	26.2	SC-6
8	43.2	18.6	16.2	6.3	16	16	28.2	SC-8
10	46.2	19.5	17.2	7.9	17	19	31.0	SC-10
12	51.2	22.0	22.8	9.5	22	22	31.0	SC-12
14	52.0	22.0	24.4	11.1	24	25	31.0	SC-14
15	52.0	22.0	24.4	11.9	24	25	31.8	SC-15
16	52.0	22.0	24.4	12.7	24	25	31.8	SC-16
18	53.5	22.0	24.4	15.1	27	30	33.3	SC-18
20	55.0	22.0	26.0	15.9	30	32	34.8	SC-20
22	55.0	22.0	26.0	18.3	30	32	34.8	SC-22
25	65.0	26.5	31.3	21.8	35	38	40.4	SC-25
28	85.0	36.6	36.6	21.8	41	46	43.4	SC-28
30	92.7	39.2	39.6	26.2	46	50	49.5	SC-30
32	97.3	41.6	42.0	28.6	46	50	51.3	SC-32
38	113.6	47.9	49.4	33.7	55	57	58.4	SC-38