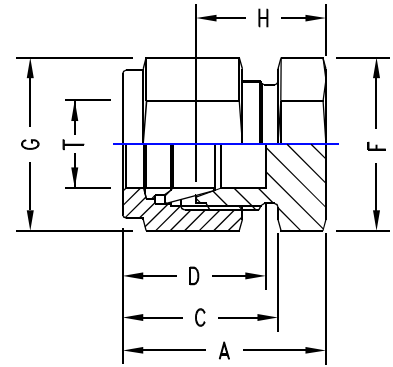


TUBE END CLOSURE

INCH OD Tubes

T Tube A OD A/F A/F	C	D	F	G	H Part No.		
1/16	13.0	11.0	8.6	11	8	11.2	1	SPC
1/8	20.0	15.3	12.7	11	11	13.5	2	SPC
1/4	23.4	17.8	15.3	14	14	16.0	4	SPC
5/16	24.4	18.5	16.3	16	16	17.0	5	SPC
3/8	25.7	19.3	16.8	17	17	18.3	6	SPC
1/2	29.2	21.8	22.9	22	22	19.0	8	SPC
5/8	30.0	21.8	24.4	24	25	19.8	10	SPC
3/4	31.5	21.8	24.4	27	28.5	21.4	12	SPC
7/8	34.0	21.8	25.9	35	32	23.9	14	SPC
1	38.4	26.4	31.2	35	38	26.2	16	SPC
1.1/4	53.3	38.9	41.2	46	50	31.2	20	SPC
1.1/2	64.5	45.2	50.0	55	57	37.4	24	SPC
2	88.6	62.7	67.6	70.0	76.0	49.3	32	SPC



METRIC OD Tubes

T Tube A ODA/F A/F	C	D	F	G	H	TU-LOK Part No.	
3	20.1	15.3	12.9	11	11	13.5	SPC-3
6	23.1	17.7	15.3	14	14	15.7	SPC-6
8	24.5	18.6	16.2	16	16	17.0	SPC-8
10	26.6	19.5	17.2	17	19	19.0	SPC-10
12	29.1	22.0	22.8	22	22	19.0	SPC-12
14	29.9	22.0	24.4	24	25	19.8	SPC-14
15	29.9	22.0	24.4	24	25	19.8	SPC-15
16	29.9	22.0	24.4	24	25	19.8	SPC-16
18	31.4	22.0	24.4	27	30	21.3	SPC-18
20	34.0	22.0	26.0	32	32	23.9	SPC-20
22	34.0	22.0	26.0	32	32	23.9	SPC-22
25	38.5	26.5	31.3	35	38	26.2	SPC-25
28	48.5	36.6	36.6	41	46	27.7	SPC-28
30	53.4	39.2	39.6	46	50	31.8	SPC-30
32	55.8	41.6	42.0	46	50	32.8	SPC-32
38	65.4	47.9	49.4	55	57	37.8	SPC-38



FITTING END CLOSURE

INCH OD Tubes

OD	A/F	Part No.	
1/16	8	1	SFC
1/8	11	2	SFC
1/4	14	4	SFC
5/16	16	5	SFC
3/8	17	6	SFC
1/2	22	8	SFC
5/8	25	10	SFC
3/4	28.5	12	SFC
7/8	32	14	SFC
1	38	16	SFC
1.1/4	50	20	SFC
1.1/2	57	24	SFC
2	76	32	SFC

METRIC OD Tubes

OD	A/F	Part No.
3	11	SFC-3
6	14	SFC-6
8	16	SFC-8
10	19	SFC-10
12	22	SFC-12
14	25	SFC-14
15	25	SFC-15
16	25	SFC-16
18	30	SFC-18
20	32	SFC-20
22	32	SFC-22
25	38	SFC-25
28	46	SFC-28
30	50	SFC-30
32	50	SFC-32
38	57	SFC-38

