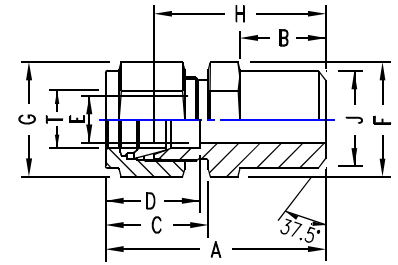


BUTT WELD PIPE CONNECTOR

INCH OD Tubes to Pipe*

T Weld OD	Pipe Male	A	B	C	D	E min.	F A/F	G A/F	H	J	Tube Part No.
1/8	1/8	30.5	9.6	15.3	12.7	2.4	11	11	23.9	10.3	2 SC-NB BW
1/4	1/8	32.8	9.6	17.8	15.3	4.8	14	14	25.4	10.3	4-2 CS-NB BW
1/4	1/4	37.8	14.3	17.8	15.3	4.8	14	14	30.5	13.7	4 SC-NB BW
5/16	1/8	34.0	9.6	18.5	16.3	5.1	14	16	26.7	10.3	5-2 SC-NB BW
5/16	1/4	38.6	14.3	18.5	16.3	6.3	16	16	31.2	13.7	5-4 SC-NB BW
3/8	1/4	39.9	14.3	19.3	16.8	7.1	16	17	32.5	13.7	6-4 SC-NB BW
3/8	3/8	39.9	14.3	19.3	16.8	7.1	17	17	32.5	17.2	6 SC-NB BW
3/8	1/2	46.3	19.1	19.3	16.8	7.1	22	17	38.9	21.3	6-8 SC-NB BW
1/2	3/8	43.4	14.3	21.8	22.9	10.4	22	22	33.3	17.2	8-6 SC-NB BW
1/2	1/2	49.0	19.1	21.8	22.9	10.4	22	22	38.9	21.3	8 SC-NB BW
1/2	3/4	50.5	19.1	21.8	22.9	10.4	27	22	40.4	26.7	8-12 SC-NB BW
5/8	1/2	49.0	19.1	21.8	24.4	12.7	24	25	38.9	21.3	10-8 SC-NB BW
3/4	3/4	50.5	19.1	21.8	24.4	15.8	27	29	40.4	26.7	12 SC-NB BW
1	1	62.2	23.8	26.4	31.2	22.3	35	38	50.0	33.4	16 SC-NB BW
1.1/4	1.1/4	77.2	23.8	38.9	41.2	27.6	46	50	55.2	42.2	20 SC-NB BW
1.1/2	1.1/2	88.9	26.2	45.2	50.0	34	55	60	61.7	48.3	24 SC-NB BW



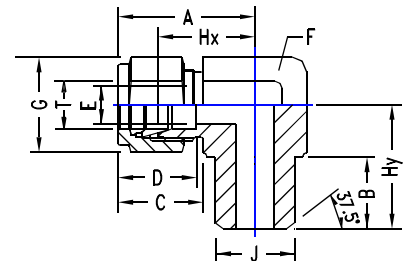
METRIC OD Tubes to Pipe*

T Tube OD	Pipe Weld Male	A	B	C	D	E min.	F A/F	G A/F	H	J	TU-LOK TU-LOK.. Part No.
3	1/8	30.5	9.6	15.3	12.9	2.4	11	11	23.9	10.3	SC-NB BW-3-2
6	1/8	32.8	9.6	17.8	15.3	4.8	14	14	25.4	10.3	SC-NB BW-6-2
6	1/4	37.9	14.3	17.8	15.3	4.8	14	14	30.5	13.7	SC-NB BW-6-4
8	1/8	34.2	9.6	18.5	16.3	5.1	16	16	26.7	10.3	SC-NB BW-8-2
8	1/4	38.7	14.3	18.5	16.3	6.3	16	16	31.2	13.7	SC-NB BW-8-4
8	1/2	45.6	19.1	18.5	16.3	6.3	22	16	38.1	21.3	SC-NB BW-8
10	1/4	40.9	14.3	19.5	17.2	7.1	19	19	33.3	13.7	SC-NB BW-10-4
10	3/8	40.9	14.3	19.5	17.2	7.9	19	19	33.3	17.2	SC-NB BW-10-6
10	1/2	46.5	19.1	19.5	17.2	7.9	22	19	38.9	21.3	SC-NB BW-10-8
12	1/4	43.4	14.3	22.0	22.9	7.1	22	22	33.3	13.7	SC-NB BW-12-4
12	3/8	43.4	14.3	22.0	22.9	9.5	22	22	33.3	17.2	SC-NB BW-12-6
12	1/2	49.0	19.1	22.0	22.9	9.5	22	22	38.9	21.3	SC-NB BW-12
16	1/2	49.0	19.1	22.0	24.4	12.7	24	25	38.9	21.3	SC-NB BW-16-8
20	3/4	52.3	19.1	22.0	26	15.9	30	32	42.2	26.7	SC-NB BW-20-12
22	3/4	52.3	19.1	22.0	26	15.9	30	32	42.2	26.7	SC-NB BW-22-12
25	1	62.3	23.8	26.5	31.3	21.8	35	38	50.0	33.4	SC-NB BW-25-16
30	1.1/4	77.2	23.8	39.2	39.6	26.2	45	50	55.6	42.2	SC-NB BW-30-20
32	1.1/4	79.6	23.8	41.6	42.0	28.6	45	50	56.6	42.2	SC-NB BW-32-20
38	1.1/2	91.6	26.2	47.9	49.4	33.7	55	57	64.0	48.3	SC-NB BW-38-24

BUTT WELD PIPE ELBOW

INCH OD Tubes to Pipe*

T Tube OD	Pipe Weld Male	A	B	C	D	E min.	F A/F	G A/F	Hx	Hy	J TU-LOK.. Part No.
1/4	1/8	27.0	9.6	17.8	15.3	4.8	14	14	19.6	18.8	10.3	4-2 SE-NB BW
1/4	1/4	27.0	14.3	17.8	15.3	4.8	14	14	19.6	23.4	13.7	4 SE-NB BW
3/8	1/4	30.5	14.3	19.3	16.8	7.1	16	17	23.1	25.9	13.7	6-4 SE-NB BW
1/2	1/2	36.0	19.1	21.8	22.9	10.4	22	22	25.9	33.0	21.3	8 SE-NB BW
3/4	3/4	39.9	19.1	21.8	24.4	15.8	27	29	29.7	36.8	26.7	12 SE-NB BW
1	1	49.0	23.8	26.4	31.2	22.3	35	38	36.8	46.5	33.4	16 SE-NB BW
1.1/4	1.1/4	66.5	23.8	38.9	41.2	27.6	45	50	44.5	47.8	42.2	20 SE-NB BW
1.1/2	1.1/2	78.0	26.2	45.2	50.0	34.0	50	57	50.8	60.5	48.3	24 SE-NB



* Reference specification : ANSI B36.19, BS:1387, DIN2391, IS:1239