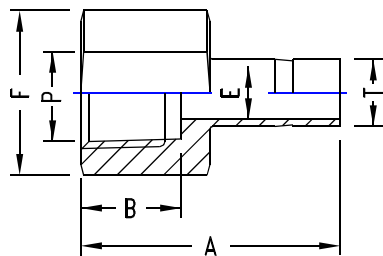


FEMALE ADAPTER

INCH OD Tubes X Female NPT Threads



T be NPT OD	P Female	A	B	E min.	F A/F	TU-LOK Part No.
1/8	1/8	31.5	10.4	2.4	14	2 SAF -N
1/8	1/4	35.3	15.0	2.4	19	2-4 SAF -N
1/4	1/8	33.0	10.4	4.8	14	4-2 SAF -N
1/4	1/4	37.0	15.0	4.8	19	4 SAF -N
1/4	3/8	39.4	15.0	4.8	22	4-6 SAF -N
1/4	1/2	45.5	19.8	4.8	27	4-8 SAF -N
5/16	1/4	37.6	15.0	6.3	19	5-4 SAF -N
3/8	1/4	38.1	15.0	7.1	19	6-4 SAF -N
3/8	3/8	40.4	15.0	7.1	22	6 SAF -N
3/8	1/2	46.7	19.8	7.1	27	6-8 SAF -N
1/2	1/4	43.5	15.0	9.9	19	8-4 SAF -N
1/2	3/8	45.5	15.0	9.9	22	8-6 SAF -N
1/2	1/2	51.8	19.8	9.9	27	8 SAF -N
5/8	1/2	53.0	19.8	12.7	27	10-8 SAF -N
3/4	1/2	52.8	19.8	15.0	27	12-8 SAF -N
3/4	3/4	52.8	20.6	15.0	35	12 SAF -N
3/4	1	58.4	25.4	15.0	41	12-16 SAF -N
1	3/4	60.7	20.6	20.3	35	16 SAF -N
1	1	64.3	25.4	20.3	41	16-12 SAF -N
1.1/4	1.1/4	77.7	25.4	27.6	55	20 SAF -N
1.1/2	1.1/2	88.9	27.6	33.2	60	24 SAF -N

INCH OD Tubes X Female ISO* Tapered Pipe Threads

T Tube ISO OD Female	P	A	B	E min.	F A/F	TU-LOK Part No.
1/4	1/4	37.0	15.0	4.8	19	4 SAF -Rx
1/4	3/8	39.4	15.0	4.8	22	4-6 SAF -Rx
1/4	1/2	45.5	19.8	4.8	27	4-8 SAF -Rx
3/8	1/4	38.1	15.0	7.1	19	6-4 SAF -Rx
3/8	3/8	40.4	15.0	7.1	22	6 SAF -Rx
1/2	1/4	43.5	15.0	9.9	19	8-4 SAF -Rx
1/2	3/8	45.5	15.0	9.9	22	8-6 SAF -Rx
1/2	1/2	51.8	19.8	9.9	27	8 SAF -Rx
3/4	3/4	52.8	20.6	15.0	35	12 SAF -Rx
3/4	1	58.4	25.4	15.0	41	12-16 SAF -Rx
1	3/4	60.7	20.6	20.3	35	16 SAF -Rx
1	1	64.3	25.4	20.3	41	16-12 SAF -Rx
1.1/4	1.1/4	77.7	25.4	27.6	55	20 SAF -Rx
1.1/2	1.1/2	88.9	27.6	33.2	60	24 SAF -Rx

NOTE: The combinations shown above are representative of various possibilities. Other combinations not shown are also available. Please consult us.

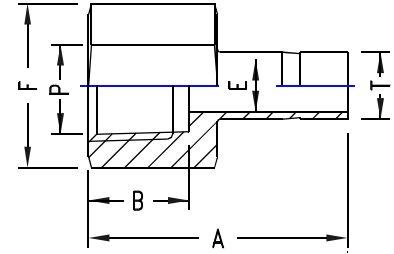
* Reference Specifications : BS 21: ISO 7/1 : JIS B 0203 : DIN 2999 : IS 554

NOTE: Female adaptors are also available with ISO parallel Female Pipe Threads, Their dimensions are same as for similar combination of tube and ISO Taper Pipe Threads. Please consult us.

FEMALE ADAPTER

METRIC OD Tubes X Female NPT Threads

T Tube NPT OD	P Female	A	B	E min.	F A/F	TU-LOK Part No.
3	1/4	31.7	15.0	2.4	14	SAF 3-4N
6	1/8	32.5	9.9	4.6	14	SAF 6-2N
6	1/4	37.1	15.0	4.6	19	SAF 6-4N
8	1/4	37.6	15.0	6.4	19	SAF 8-4N
10	1/4	38.1	15.0	7.7	19	SAF 10-4N
10	3/8	40.1	15.0	7.7	22	SAF 10-6N
10	1/2	46.5	19.8	7.7	27	SAF 10-8N
12	1/4	43.7	15.0	9.1	19	SAF 12-4N
12	1/2	52.3	19.8	9.1	27	SAF 12-8N
16	1/2	47.7	19.8	9.1	27	SAF 16-8N
22	3/4	52.0	20.6	15.0	35	SAF 22-12N
25	3/4	51.2	20.6	15.0	35	SAF 25-12N
25	1	66.5	25.4	19.8	41	SAF 25-16N
32	1.1/4	78.0	25.4	27.4	55	SAF 32-20N
38	1.1/2	88.9	27.6	33.3	60	SAF 38-24N



METRIC OD Tubes X Female ISO* Tapered Pipe Threads

T Tube ISO OD Female	P	A	B	E min.	F A/F	TU-LOK Part No.
6	1/8	32.5	9.9	4.6	14	SAF 6-2Rx
6	1/4	37.1	15.0	4.6	19	SAF 6-4Rx
8	1/4	37.6	15.0	6.4	19	SAF 8-4Rx
10	1/4	38.1	15.0	7.7	19	SAF 10-4Rx
10	3/8	40.1	15.0	7.7	22	SAF 10-6Rx
12	1/4	43.7	15.0	9.1	19	SAF 12-4Rx
12	1/2	52.3	19.8	9.1	27	SAF 12-8Rx
16	1/2	47.7	19.8	9.1	27	SAF 16-8Rx
22	3/4	52.0	20.6	15.0	35	SAF 22-12Rx
25	3/4	51.2	20.6	15.0	35	SAF 25-12Rx
25	1	66.5	25.4	19.8	41	SAF 25-16Rx
32	1.1/4	78.0	25.4	27.4	55	SAF 32-20Rx
38	1.1/2	88.9	27.6	33.3	60	SAF 38-24Rx

* Reference Specifications : BS 21: ISO 7/1 : JIS B 0203 : DIN 2999 : IS 554

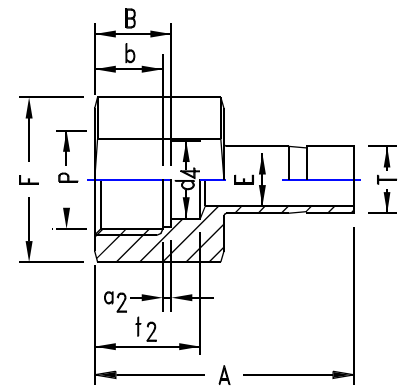
FEMALE MANOMETER ADAPTER

INCH OD Ports X Female ISO* Parallel Threads (gage)

T Tube ISO Od Female	P	A	B	E min.	F A/F	a2	d4	b min.	t2	TU-LOK Part No.
1/4	1/4	35.3	13.0	4.8	19	1.6	5.8	9.4	17.0	4 SAF-MAN
3/8	3/8	39.4	14.2	6.6	24	1.6	-	9.9	-	6 SAF-MAN
1/2	1/2	45.7	18.8	7.1	27	1.6	-	14.5	-	8 SAF-MAN

METRIC OD Ports X Female ISO* Parallel Threads (gage)

T Tube ISO Od Female	P	A	B	E min.	F A/F	a2	d4	b min.	t2	TU-LOK Part No.
6	1/4	35.3	12.9	4.6	19	1.6	5.5	9.5	17.0	SAF 6-4MAN
6	3/8	38.4	14.1	4.6	24	1.6	6.5	10.0	20.3	SAF 6MAN
6	1/2	42.9	18.9	4.6	27	1.6	7.0	14.5	24.9	SAF 6-8MAN
8	1/4	33.0	12.9	5.5	19	1.6	-	9.5	-	SAF 8-4MAN
8	1/2	43.7	18.9	6.2	27	1.6	7.0	14.5	24.9	SAF 8MAN
10	1/4	34.5	12.9	5.5	19	1.6	-	9.5	-	SAF 10-4MAN
10	1/2	40.1	18.9	7.0	27	1.6	-	14.5	-	SAF 10-8MAN
12	1/4	40.1	12.9	5.5	19	1.6	-	9.5	-	SAF 12-4MAN
12	1/2	48.8	18.9	7.0	27	1.6	-	14.5	-	SAF 12-8MAN



No seal is made around the male thread. Instead, a gasket is dropped into the flat bottom in the female thread, and the end of the male threaded end exerts a load on the gasket to seal.

* Reference Specifications : BS 2779 : ISO 228/1 : JIS B0202 : DIN-ISO 228/1