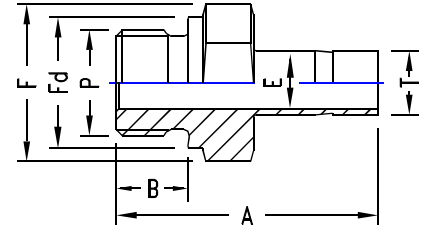


## MALE ADAPTER

### INCH OD Tubes x Male ISO\* Parallel Threads - RS

T Tube ISO OD	P Male	A	B	E min.	F A/F	Fd	TU-LOK Part No.
1/8	1/8	31.0	7.1	2.4	14	13.7	2 SAM-Rs
1/8	1/4	35.8	11.2	2.4	19	17.8	2-4 SAM-Rs
1/4	1/8	33.3	7.1	4.0	14	13.7	4-2 SAM-Rs
1/4	1/4	38.1	11.2	4.8	19	17.8	4 SAM-Rs
3/8	1/4	39.9	11.2	5.8	19	17.8	6-4 SAM-Rs
3/8	3/8	40.6	11.2	7.1	22	21.6	6 SAM-Rs
1/2	1/4	45.5	11.2	5.8	19	17.8	8-4 SAM-Rs
1/2	3/8	46.3	11.2	7.9	22	21.6	8-6 SAM-Rs
1/2	1/2	49.3	14.2	9.9	27	26.0	8 SAM-Rs
3/4	3/4	54.9	15.7	15.0	32	31.8	12 SAM-Rs
1	1	64.5	18.2	19.8	41	38.8	16-12 SAM-Rs
1.1/4	1.1/4	79.5	19.8	27.4	50	49.0	20 SAM-Rs
1.1/2	1.1/2	93.7	22.1	33.3	55	54.7	24 SAM-Rs



### METRIC OD Tubes x Male ISO\* Parallel Threads - RS

T Tube ISO OD	P Male	A	B	E min.	F A/F	Fd	TU-LOK Part No.
3	1/8	31.0	7.1	2.4	14	13.7	SAM 3-2Rs
3	1/4	35.8	11.2	22.0	19	17.8	SAM 3-4Rs
6	1/8	34.3	7.1	4.0	14	13.7	SAM 6-2Rs
6	1/4	39.1	11.2	4.6	19	17.8	SAM 6-4Rs
8	1/4	40.1	11.2	5.8	19	17.8	SAM 8-4Rs
10	1/4	40.9	11.2	5.8	19	17.8	SAM 10-4Rs
10	3/8	41.7	11.2	7.7	22	21.7	SAM 10-6Rs
10	1/2	44.7	14.2	7.7	27	25.9	SAM 10-8Rs
12	1/4	46.7	11.2	5.8	19	17.8	SAM 12-4Rs
12	3/8	47.2	11.2	7.9	22	21.7	SAM 12-6Rs
12	1/2	50.5	14.2	9.1	27	25.9	SAM 12-8Rs
16	1/2	50.5	14.2	12.7	27	25.9	SAM 16-8Rs
22	3/4	55.2	15.7	15.8	35	32.0	SAM 22-12Rs
22	1	64.5	18.3	19.8	41	39.0	SAM 22-16Rs
25	1.1/4	79.5	19.8	27.4	50	49.0	SAM 25-20Rs
25	1.1/2	93.7	22.1	33.3	55	54.7	SAM 25-24Rs

\* Reference Specifications : BS 2779 : ISO 228/1 : JIS B0202 : DIN-ISO 228/1

NOTE : 1. For use with soft metal gasket (usually copper) between fitting and female part face  
2. Also available in ISO Parallel Threads - RP series for beaded metal gaskets. See page 22/23 for explanation.

## O SEAL MALE ADAPTER

### INCH OD Tubes x Male Straight Threads - UNF

T Tube UNF OD	S Male	A	B	E min.	F	Fd A/F	O Ring Part No.	TU-LOK Part No.
1/8	5/16 - 24	32.5	8.6	2.4	14	13.8	1 OPU	2 SAO-U
1/4	7/16 - 24	39.2	10.4	4.8	19	18.8	2 OPU	4 SAO-U
5/16	1/2 - 24	41.7	11.2	6.3	22	21.8	3 OPU	5 SAO-U
5/16	9/16 - 24	43.2	12.0	7.1	24	23.6	4 OPU	6 SAO-U
1/2	3/4 - 24	49.5	12.0	9.9	27	26.8	6 OPU	8 SAO-U
3/4	11/16 - 12	55.0	14.3	15.0	38	37.8	12 OPU	12 SAO-U
1	15/16 - 12	62.5	14.3	19.8	45	44.0	16 OPU	16 SAO-U
1.1/4	15/8 - 12	79.5	18.3	27.4	55	54.0	20 OPU	20 SAO-U
1.1/2	17/8 - 12	92.2	19.8	33.3	60	58.0	24 OPU	24 SAO-U

