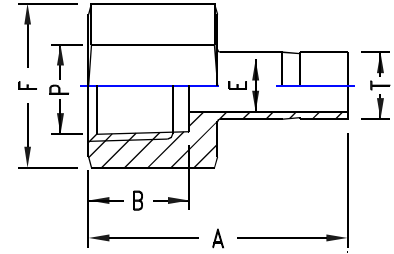


FEMALE ADAPTER

METRIC OD Tubes X Female NPT Threads

T Tube NPT OD	P Female	A	B	E min.	F A/F	TU-LOK Part No.
3	1/4	31.7	15.0	2.4	14	SAF 3-4N
6	1/8	32.5	9.9	4.6	14	SAF 6-2N
6	1/4	37.1	15.0	4.6	19	SAF 6-4N
8	1/4	37.6	15.0	6.4	19	SAF 8-4N
10	1/4	38.1	15.0	7.7	19	SAF 10-4N
10	3/8	40.1	15.0	7.7	22	SAF 10-6N
10	1/2	46.5	19.8	7.7	27	SAF 10-8N
12	1/4	43.7	15.0	9.1	19	SAF 12-4N
12	1/2	52.3	19.8	9.1	27	SAF 12-8N
16	1/2	47.7	19.8	9.1	27	SAF 16-8N
22	3/4	52.0	20.6	15.0	35	SAF 22-12N
25	3/4	51.2	20.6	15.0	35	SAF 25-12N
25	1	66.5	25.4	19.8	41	SAF 25-16N
32	1.1/4	78.0	25.4	27.4	55	SAF 32-20N
38	1.1/2	88.9	27.6	33.3	60	SAF 38-24N



METRIC OD Tubes X Female ISO* Tapered Pipe Threads

T Tube ISO OD Female	P	A	B	E min.	F A/F	TU-LOK Part No.
6	1/8	32.5	9.9	4.6	14	SAF 6-2Rx
6	1/4	37.1	15.0	4.6	19	SAF 6-4Rx
8	1/4	37.6	15.0	6.4	19	SAF 8-4Rx
10	1/4	38.1	15.0	7.7	19	SAF 10-4Rx
10	3/8	40.1	15.0	7.7	22	SAF 10-6Rx
12	1/4	43.7	15.0	9.1	19	SAF 12-4Rx
12	1/2	52.3	19.8	9.1	27	SAF 12-8Rx
16	1/2	47.7	19.8	9.1	27	SAF 16-8Rx
22	3/4	52.0	20.6	15.0	35	SAF 22-12Rx
25	3/4	51.2	20.6	15.0	35	SAF 25-12Rx
25	1	66.5	25.4	19.8	41	SAF 25-16Rx
32	1.1/4	78.0	25.4	27.4	55	SAF 32-20Rx
38	1.1/2	88.9	27.6	33.3	60	SAF 38-24Rx

* Reference Specifications : BS 21: ISO 7/1 : JIS B 0203 : DIN 2999 : IS 554

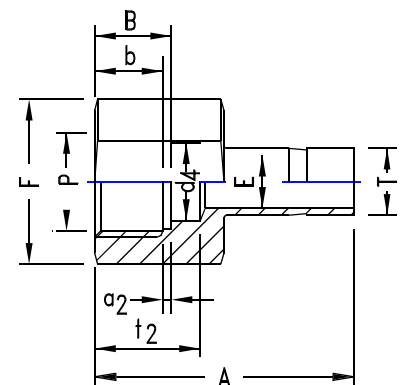
FEMALE MANOMETER ADAPTER

INCH OD Ports X Female ISO* Parallel Threads (gage)

T Tube ISO Od Female	P	A	B	E min.	F A/F	a2	d4	b min.	t2	TU-LOK Part No.
1/4	1/4	35.3	13.0	4.8	19	1.6	5.8	9.4	17.0	4 SAF-MAN
3/8	3/8	39.4	14.2	6.6	24	1.6	-	9.9	-	6 SAF-MAN
1/2	1/2	45.7	18.8	7.1	27	1.6	-	14.5	-	8 SAF-MAN

METRIC OD Ports X Female ISO* Parallel Threads (gage)

T Tube ISO Od Female	P	A	B	E min.	F A/F	a2	d4	b min.	t2	TU-LOK Part No.
6	1/4	35.3	12.9	4.6	19	1.6	5.5	9.5	17.0	SAF 6-4MAN
6	3/8	38.4	14.1	4.6	24	1.6	6.5	10.0	20.3	SAF 6MAN
6	1/2	42.9	18.9	4.6	27	1.6	7.0	14.5	24.9	SAF 6-8MAN
8	1/4	33.0	12.9	5.5	19	1.6	-	9.5	-	SAF 8-4MAN
8	1/2	43.7	18.9	6.2	27	1.6	7.0	14.5	24.9	SAF 8MAN
10	1/4	34.5	12.9	5.5	19	1.6	-	9.5	-	SAF 10-4MAN
10	1/2	40.1	18.9	7.0	27	1.6	-	14.5	-	SAF 10-8MAN
12	1/4	40.1	12.9	5.5	19	1.6	-	9.5	-	SAF 12-4MAN
12	1/2	48.8	18.9	7.0	27	1.6	-	14.5	-	SAF 12-8MAN



No seal is made around the male thread. Instead, a gasket is dropped into the flat bottom in the female thread, and the end of the male threaded end exerts a load on the gasket to seal.

* Reference Specifications : BS 2779 : ISO 228/1 : JIS B0202 : DIN-ISO 228/1