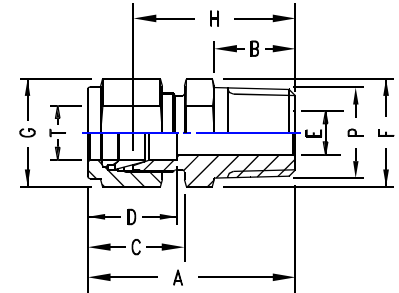


MALE CONNECTOR

INCH OD Tubes X Male NPT Threads

T Tube OD	P NPT Male	A	B	C	D	E min.	F A/F	G A/F	H TU-LOK... Part No.
1/16	1/16	23.9	9.6	11.0	8.6	1.3	8	8	20.0	1 SCM-N
1/16	1/8	26.2	9.6	11.0	8.6	1.3	14	8	22.4	1-2 SCM-N
1/8	1/8	30.5	9.6	15.3	12.7	2.4	11	11	23.9	2 SCM-N
1/8	1/4	35.6	14.3	15.3	12.7	2.4	14	11	29.0	2-4 SCM-N
1/4	1/8	32.8	9.6	17.8	15.3	4.8	14	14	25.4	4-2 SCM-N
1/4	1/4	37.8	14.3	17.8	15.3	4.8	14	14	30.5	4 SCM-N
1/4	3/8	38.4	14.3	17.8	15.3	4.8	19	14	31.0	4-6 SCM-N
1/4	1/2	44.7	19.1	17.8	15.3	4.8	22	14	37.4	4-8 SCM-N
5/16	1/4	38.6	14.3	18.5	16.3	6.3	14	16	31.2	5-4 SCM-N
3/8	1/8	35.3	9.6	19.3	16.8	4.8	16	17	27.9	6-2 SCM-N
3/8	1/4	39.8	14.3	19.3	16.8	7.1	16	17	32.5	6-4 SCM-N
3/8	3/8	39.8	14.3	19.3	16.8	7.1	19	17	32.5	6 SCM-N
3/8	1/2	41.2	19.1	19.3	16.8	7.1	22	17	38.9	6-8 SCM-N
1/2	1/4	43.4	14.3	21.8	22.9	7.1	22	22	33.3	8-4 SCM-N
1/2	3/8	43.4	14.3	21.8	22.9	9.6	22	22	33.3	8-6 SCM-N
1/2	1/2	49.0	19.1	21.8	22.9	10.4	22	22	38.9	8 SCM-N
1/2	3/4	50.5	19.1	21.8	22.9	10.4	27	22	40.4	8-12 SCM-N
1/2	1	57.1	23.8	21.8	22.9	10.4	35	22	47.0	8-16 SCM-N
5/8	3/8	44.2	14.3	21.8	24.4	9.6	24	25	34.0	10-6 SCM-N
5/8	1/2	49.0	19.1	21.8	24.4	10.4	24	25	38.9	10-8 SCM-N
3/4	1/2	50.5	19.1	21.8	24.4	10.4	27	28.5	40.4	12-8 SCM-N
3/4	3/4	50.5	19.1	21.8	24.4	15.8	27	28.5	40.4	12 SCM-N
3/4	1	57.1	23.8	21.8	24.4	15.8	35	28.5	47.0	12-16 SCM-N
7/8	3/4	50.5	19.1	21.8	26.0	15.8	30	32	40.4	14-12 SCM-N
1	1/2	57.4	19.1	26.4	31.2	10.4	35	38	45.2	16-8 SCM-N
1	3/4	57.4	19.1	26.4	31.2	15.8	35	38	45.2	16-12 SCM-N
1	1	62.2	23.8	26.4	31.2	22.3	35	38	50.0	16 SCM-N
1.1/4	1	77.2	23.8	38.9	41.2	22.3	46	50	55.2	20-16 SCM-N
1.1/4	1.1/4	77.2	23.8	38.9	41.2	27.6	46	50	55.2	20 SCM-N
1.1/2	1.1/2	88.9	26.2	45.2	50.0	34.0	55	57	61.7	24 SCM-N
2	2	113.5	26.9	62.7	67.6	46.0	70	76	76.2	32 SCM-N



INCH OD Tubes X Male ISO * Tapered Pipe Threads

T Tube OD	P ISO Male	A	B	C	D	E min.	F A/F	G A/F	H	TU-LOK Part No.
1/8	1/8	30.5	9.6	15.3	12.7	2.4	11	11	23.9	2 SCM-Rx
1/8	1/4	35.6	14.3	15.3	12.7	2.4	14	11	29.0	2-4 SCM-Rx
1/4	1/8	32.8	9.6	17.8	15.3	4.8	14	14	25.4	4-2 SCM-Rx
1/4	1/4	37.8	14.3	17.8	15.3	4.8	14	14	30.1	4 SCM-Rx
1/4	3/8	38.4	14.3	17.8	15.3	4.8	19	14	31.0	4-6 SCM-Rx
1/4	1/2	44.7	19.1	17.8	15.3	4.8	22	14	37.4	4-8 SCM-Rx
3/8	1/8	35.3	9.6	19.3	16.8	4.8	16	17	27.9	6-2 SCM-Rx
3/8	1/4	39.8	14.3	19.3	16.8	7.1	16	17	32.5	6-4 SCM-Rx
3/8	3/8	39.8	14.3	19.3	16.8	7.1	19	17	32.5	6 SCM-Rx
3/8	1/2	41.2	19.1	19.3	16.8	7.1	22	17	38.9	6-8 SCM-Rx
1/2	1/4	43.4	14.3	21.8	22.9	7.1	22	22	33.3	8-4 SCM-Rx
1/2	3/8	43.4	14.3	21.8	22.9	9.6	22	22	33.3	8-6 SCM-Rx
1/2	1/2	49.0	19.1	21.8	22.9	10.4	22	22	38.9	8 SCM-Rx
3/4	3/4	50.5	19.1	21.8	24.4	15.8	27	28.5	40.4	12 SCM-Rx
1	1	62.2	23.8	26.4	31.2	22.3	35	38	50.0	16 SCM-Rx
1.1/4	1	77.2	23.8	38.9	41.2	22.3	46	50	55.2	20-16 SCM-Rx
1.1/4	1.1/4	77.2	23.8	38.9	41.2	27.6	46	50	55.2	20 SCM-Rx
1.1/2	1.1/2	88.9	26.2	45.2	50.0	34.0	55	57	61.7	24 SCM-Rx

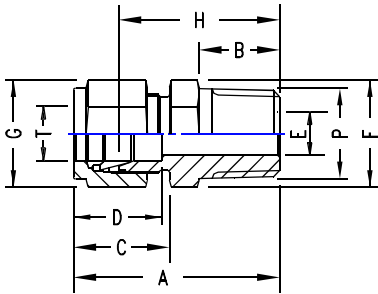
NOTE: The combination of tube OD and male threads are indicative of popular sizes. Other combinations, not shown, are available. Please Consult us.

BORED - THROUGH CONNECTORS available in all these sizes. Add suffix "BT" to the above part numbers to designate bored - trough male connector.

* Reference Specifications : BS 21 : ISO 7/1 : JIS B 0203 : DIN 2999 : IS 554

MALE CONNECTOR

METRIC OD Tubes x Male NPT Threads



T Tube OD	P NPT Male	A	B	C	D	E min.	F A/F	G A/F	H	TU-LOK Part No.
3	1/8	30.5	9.6	15.3	12.9	2.4	11	11	23.9	SCM 3-2N
3	1/4	35.6	14.3	15.3	12.9	2.4	14	11	29.0	SCM 3-4N
6	1/8	32.8	9.6	17.7	15.3	4.8	14	14	25.4	SCM 6-2N
6	1/4	37.9	14.3	17.7	15.3	4.8	14	14	30.5	SCM 6-4N
6	3/8	38.4	14.3	17.7	15.3	4.8	19	14	31.0	SCM 6-N
6	1/2	44.7	19.1	17.7	15.3	4.8	22	14	37.3	SCM 6-8N
8	1/8	34.2	9.6	18.6	16.2	4.8	14	16	26.7	SCM 8-2N
8	1/4	38.7	14.3	18.6	16.2	6.3	14	16	31.2	SCM 8-4N
8	3/8	39.3	14.3	18.6	16.2	6.3	19	16	31.8	SCM 8-6N
8	1/2	45.6	19.1	18.6	16.2	6.3	22	16	38.1	SCM 8-N
10	1/8	36.3	9.6	19.5	17.2	4.8	17	19	28.7	SCM 10-2N
10	1/4	40.9	14.3	19.5	17.2	7.9	19	19	33.3	SCM 10-4N
10	3/8	40.9	14.3	19.5	17.2	7.9	19	19	33.3	SCM 10-6N
10	1/2	46.5	19.1	19.5	17.2	7.9	22	19	38.9	SCM 10-8N
12	1/4	43.4	14.3	22.0	22.8	7.1	22	22	33.3	SCM 12-4N
12	3/8	43.4	14.3	22.0	22.8	9.5	22	22	33.3	SCM 12-6N
12	1/2	49.0	19.1	22.0	22.8	9.5	22	22	38.9	SCM 12-8N
12	3/4	50.5	19.1	22.0	22.8	9.5	27	22	40.4	SCM 12-N
12	1	57.1	23.8	22.0	22.8	9.5	35	22	47.0	SCM 12-16N
14	1/4	44.1	14.3	22.0	24.4	7.1	24	25	34.0	SCM 14-4N
14	3/8	44.1	14.3	22.0	24.4	9.5	24	25	34.0	SCM 14-6N
14	1/2	49.0	19.1	22.0	24.4	11.1	24	25	38.9	SCM 14-8N
15	1/2	49.0	19.1	22.0	24.4	11.9	24	25	38.9	SCM 15 8N
16	3/8	44.1	14.3	22.0	24.4	9.5	24	25	34.0	SCM 16-6N
16	1/2	49.0	19.1	22.0	24.4	11.9	24	25	38.9	SCM 16-8N
16	3/4	50.5	19.1	22.0	24.4	12.7	27	25	40.4	SCM 16-12N
18	1/2	50.5	19.1	22.0	24.4	11.9	27	30	40.4	SCM 18-8N
18	3/4	50.5	19.1	22.0	24.4	15.1	27	30	40.4	SCM 18-12N
20	1/2	52.3	19.1	22.0	26.0	11.9	30	32	42.2	SCM 20-8N
20	3/4	52.3	19.1	22.0	26.0	15.9	30	32	42.2	SCM 20-12N
22	3/4	52.3	19.1	22.0	26.0	15.9	30	32	42.2	SCM 22-12N
22	1	57.1	23.8	22.0	26.0	18.3	35	32	47.0	SCM 22 16N
25	1/2	57.5	19.1	26.5	31.3	11.9	35	38	45.2	SCM 25- 8N
25	3/4	57.5	19.1	26.5	31.3	15.8	35	38	45.2	SCM 25-12N
25	1	62.3	23.8	26.5	31.3	21.8	35	38	50.0	SCM 25-16N
28	1	72.4	23.8	36.6	36.6	21.8	41	46	51.6	SCM 28-16N
28	1.1/4	73.1	23.8	36.6	36.6	21.8	46	46	52.3	SCM 28-20N
30	1.1/4	77.2	23.8	39.2	39.6	26.2	46	50	55.6	SCM 30-20N
32	1.1/4	79.6	23.8	41.6	42.0	28.6	46	50	56.6	SCM 32-20N
38	1.1/2	96.6	26.2	47.9	49.4	33.7	55	57	64.0	SCM 38-24N

Bored-Through Fittings for Thermocouples



To order, add BT to the desired Male Connector Part Number : 8 SCM - N. BT

Example : Bored Through Connection 1/2" OD x 1/2" NPT (M) with 1/2" OD through bore has part number.