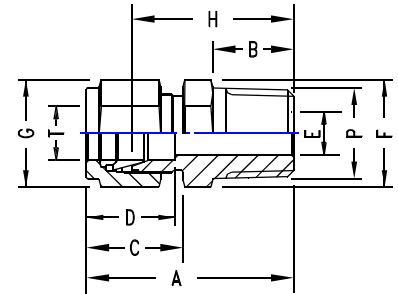


MALE CONNECTOR

METRIC OD Tubes x Male ISO* Tapered Pipe Thread

T Tube OD	P ISO Male	A	B	C	D	E min.	F A/F	G A/F	H	TU-LOK Part No.
3	1/8	30.5	9.6	15.3	12.9	2.4	11	11	23.9	SCM 3-2 Rx
3	1/4	35.6	14.3	15.3	12.9	2.4	14	11	29.0	SCM 3-4 Rx
6	1/8	32.8	9.6	17.7	15.3	4.8	14	14	25.4	SCM 6-2 Rx
6	1/4	37.9	14.3	17.7	15.3	4.8	14	14	30.5	SCM 6-4 Rx
6	3/8	38.4	14.3	17.7	15.3	4.8	19	14	31.0	SCM 6 Rx
6	1/2	44.7	19.1	17.7	15.3	4.8	22	14	37.3	SCM 6-8 Rx
8	1/8	34.2	9.6	18.6	16.2	4.8	14	16	26.7	SCM 8-2 Rx
8	1/4	38.7	14.3	18.6	16.2	6.3	14	16	31.2	SCM 8-4 Rx
8	3/8	39.3	14.3	18.6	16.2	6.3	19	16	31.8	SCM 8-6 Rx
8	1/2	45.6	19.1	18.6	16.2	6.3	22	16	38.1	SCM 8 Rx
10	1/8	36.3	9.6	19.5	17.2	4.8	17	19	28.7	SCM 10-2 Rx
10	1/4	40.9	14.3	19.5	17.2	7.9	19	19	33.3	SCM 10-4 Rx
10	3/8	40.9	14.3	19.5	17.2	7.9	19	19	33.3	SCM 10-6 Rx
10	1/2	46.5	19.1	19.5	17.2	7.9	22	19	38.9	SCM 10-8 Rx
12	1/4	43.4	14.3	22.0	22.8	7.1	22	22	33.3	SCM 12-4 Rx
12	3/8	43.4	14.3	22.0	22.8	9.5	22	22	33.3	SCM 12-6 Rx
12	1/2	49.0	19.1	22.0	22.8	9.5	22	22	38.9	SCM 12-8 Rx
12	3/4	50.5	19.1	22.0	22.8	9.5	27	22	40.4	SCM 12 Rx
12	1	57.1	23.8	22.0	22.8	9.5	35	22	47.0	SCM 12-16 Rx
14	3/8	44.1	14.3	22.0	24.4	9.5	24	25	34.0	SCM 14-6 Rx
14	1/2	49.0	19.1	22.0	24.4	11.1	24	25	38.9	SCM 14-8 Rx
15	1/2	49.0	19.1	22.0	24.4	11.9	24	25	38.9	SCM 15 8 Rx
16	3/8	44.1	14.3	22.0	24.4	9.5	24	25	34.0	SCM 16-6 Rx
16	1/2	49.0	19.1	22.0	24.4	11.9	24	25	38.9	SCM 16-8 Rx
16	3/4	50.5	19.1	22.0	24.4	12.7	27	25	40.4	SCM 16-12 Rx
18	1/2	50.5	19.1	22.0	24.4	11.9	27	30	40.4	SCM 18-8 Rx
18	3/4	50.5	19.1	22.0	24.4	15.1	27	30	40.4	SCM 18-12 Rx
20	1/2	52.3	19.1	22.0	26.0	11.9	30	32	42.2	SCM 20-8 Rx
20	3/4	52.3	19.1	22.0	26.0	15.9	30	32	42.2	SCM 20-12 Rx
22	3/4	52.3	19.1	22.0	26.0	15.9	30	32	42.2	SCM 22-12 Rx
22	1	57.1	23.8	22.0	26.0	18.3	35	32	47.0	SCM 22 16 Rx
25	1/2	57.5	19.1	26.5	31.3	11.9	35	38	45.2	SCM 25- 8 Rx
25	3/4	57.5	19.1	26.5	31.3	15.8	35	38	45.2	SCM 25-12 Rx
25	1	62.3	23.8	26.5	31.3	21.8	35	38	50.0	SCM 25-16 Rx
28	1	72.4	23.8	36.6	36.6	21.8	41	46	51.6	SCM 28-16 Rx
28	1.1/4	73.1	23.8	36.6	36.6	21.8	46	46	52.3	SCM 28-20 Rx
30	1.1/4	77.2	23.8	39.2	39.6	26.2	46	50	55.6	SCM30-20 RX
32	1.1/4	79.6	23.8	41.6	42.0	28.6	46	50	56.6	SCM32-20 Rx
38	1.1/2	96.6	26.2	47.9	49.4	33.7	55	57	64.0	SCM 38-24 Rx



* Reference Specifications : BS 21: ISO 7/1 : JIS B 0203 : DIN 2999 : IS 554

Bored-Through Fittings for Thermocouples



To order, add BT to the desired Male Connector Part Number : 8 SCM - Rx. BT

Example : Bored Through Connection 1/2" OD x 1/2" ISO Tapered Male Pipe Thread 1/2" OD through bore has part number.