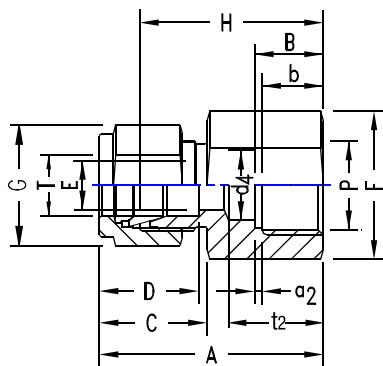


FEMALE MANOMETER CONNECTOR

Inch OD Tubes X Female Iso* Parallel Threads (gage)



T Tube OD	P ISO Female	A	B	C	D	E min.	F A/F	G A/F	H	a2 Minm.	d4 Minm.	b	t2	TU-LOK ----- Part No.
1/4	1/4	37.6	13.0	17.8	15.3	4.8	19	14	30.2	1.6	5.6	9.4	17.0	4 SCF-MAN
1/4	3/8	37.6	14.2	17.8	15.3	4.8	24	14	30.2	1.6	6.6	9.9	20.3	4-6 SCF-MAN
1/4	1/2	43.4	18.8	17.8	15.3	4.8	27	14	36.0	1.6	6.6	14.5	24.9	4-8 SCF-MAN
5/16	1/4	38.4	13.0	18.5	16.3	6.0	19	16	31.0	1.6	-	9.4	-	5-4 SCF-MAN
5/16	1/2	40.9	18.8	18.5	16.3	7.1	27	16	33.6	1.6	-	14.5	-	5-8 SCF-MAN
3/8	1/4	39.2	13.0	19.3	16.8	6.0	19	17	31.8	1.6	-	9.4	-	6-4 SCF-MAN
3/8	3/8	38.6	14.2	19.3	16.8	6.6	24	17	31.2	1.6	-	9.9	-	6 SCF-MAN
3/8	1/2	41.9	18.8	19.3	16.8	7.1	27	17	34.5	1.6	-	14.5	-	6-8 SCF-MAN
1/2	3/8	44.5	14.2	21.8	22.9	6.6	24	22	34.3	1.6	-	9.9	-	8-6 SCF-MAN
1/2	1/2	48.3	18.8	21.8	22.9	7.1	27	22	38.1	1.6	-	14.5	-	8 SCF-MAN

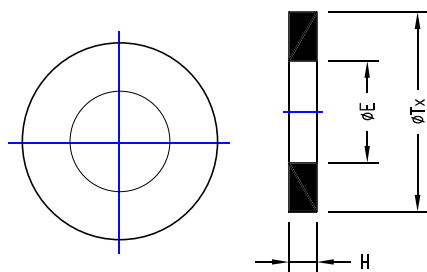
Metric OD Tubes X Female ISO* Parallel Thread (gage)

T ISO OD	P Female	A	B	C	D	E min.	F A/F	G A/F	H	a2 min	b min	d4	t2	Tube Part No.
3	1/4	35.3	12.9	15.3	12.9	2.4	19	11	28.7	1.6	9.5	5.5	17.0	SCF 3-4MAN
6	1/4	37.6	12.9	17.7	15.3	4.8	19	14	30.2	1.6	9.5	5.5	17.0	SCF 6-4MAN
6	3/8	37.6	14.1	17.7	15.3	4.8	24	14	30.2	1.6	10.0	6.5	20.3	SCF 6MAN
6	1/2	43.5	18.9	17.7	15.3	4.8	27	14	36.1	1.6	14.5	7.0	24.9	SCF 6-8MAN
8	1/4	38.5	12.9	18.6	16.2	5.5	19	16	31.0	1.6	9.5	5.5	-	SCF 8-4MAN
8	3/8	36.2	14.1	18.6	16.2	6.5	24	16	28.7	1.6	10.0	6.5	-	SCF 8-6MAN
8	1/2	41.0	18.9	18.6	16.2	7.1	27	16	33.5	1.6	14.5	7.0	-	SCF 8MAN
10	1/4	39.4	19.5	19.5	17.2	5.5	19	19	31.8	1.6	9.5	5.5	-	SCF 10-4MAN
10	3/8	38.8	19.5	19.5	17.2	6.5	24	19	31.2	1.6	10.0	6.5	-	SCF 10-6MAN
10	1/2	42.1	19.5	19.5	17.2	7.1	27	19	34.5	1.6	14.5	7.0	-	SCF 10-8MAN
12	1/4	41.9	12.9	22.0	22.8	5.5	22	22	31.8	1.6	9.5	5.5	-	SCF 12-4MAN
12	3/8	44.4	14.1	22.0	22.8	6.5	24	22	34.3	1.6	10.0	6.5	-	SCF12-6MAN
12	1/2	48.2	18.9	22.0	22.8	7.1	27	22	38.1	1.6	14.5	7.0	-	SCF 12-8MAN

No seal is made around the male thread. instead, a gasket is dropped into the flat bottom in the female thread, and the end of the male threaded end exerts a load on the gasket to seal. Details of gasket given below.

* Reference Specifications : BS 2779 : ISO 228/1 : JIS B0202 : DIN-259

MANOMETER CONNECTOR GASKET FOR FEMALE ISO PARALLEL THREADS



P ISO Female	E	H	Tx	Part No.	
				Copper	PTFE
1/4"	7.6	1.8	10.7	4 MG-Cu	4 MG-PTFE
3/8"	8.6	2.3	14.2	6 MG-Cu	6 MG-PTFE
1/2"	9.1	2.5	17.8	8 MG-Cu	8 MG-PTFE