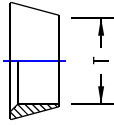


FRONT FERRULE

INCH OD Tubes



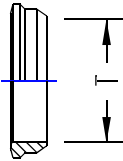
T No.	TU-LOK
1/16	1 ff
1/8	2 ff
1/4	4 ff
5/16	5 ff
3/8	6 ff
1/2	8 ff
5/8	10 ff
3/4	12 ff
7/8	14 ff
1	16 ff
1.1/4	20 ff
1.1/2	24 ff
2	32 ff

METRIC OD Tubes

T Tube OD	Tube Part Part No.
3	ff-3
6	ff-6
8	ff-8
10	ff-10
12	ff-12
14	ff-14
15	ff-15
16	ff-16
18	ff-18
20	ff-20
22	ff-22
25	ff-25
28	ff-28
30	ff-30
32	ff-32
38	ff-38

BACK FERRULE

INCH OD Tubes



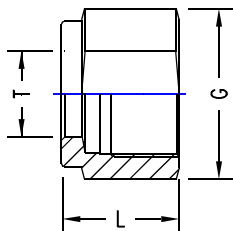
T Tube No.	TU-LOK
1/16	1 fb
1/8	2 fb
1/4	4 fb
5/16	5 fb
3/8	6 fb
1/2	8 fb
5/8	10 fb
3/4	12 fb
7/8	14 fb
1	16 fb
1.1/4	20 fb
1.1/2	24 fb
2	32 fb

METRIC OD Tubes

T OD	Tube OD Part Part No.
3	fb-3
6	fb-6
8	fb-8
10	fb-10
12	fb-12
14	fb-14
15	fb-15
16	fb-16
18	fb-18
20	fb-20
22	fb-22
25	fb-25
28	fb-28
30	fb-30
32	fb-32
38	fb-38

COUPLING CAP

INCH OD Tubes



OD	A/F	Part No.
1/16	8.0	8 1 Sn
1/8	12.0	11 2 Sn
1/4	12.7	14 4 Sn
5/16	14.0	16 5 Sn
3/8	14.5	17 6 Sn
1/2	17.5	22 8 Sn
5/8	17.5	25 10 Sn
3/4	17.5	28.5 12 Sn
7/8	17.5	32 14 Sn
1	20.6	38 16 Sn
1.1/4	31.8	50 20 Sn
1.1/2	38.0	57 24 Sn
2	52.5	76 32 Sn

METRIC OD tubes

T

OD	A/F	Part No.
3	12.0	11 Sn-3
6	12.7	14 Sn-6
8	13.5	16 Sn-8
10	15.1	19 Sn-10
12	17.5	22 Sn-12
14	17.5	25 Sn-14
15	17.5	25 Sn-15
16	17.5	25 Sn-16
18	17.5	30 Sn-18
20	17.5	32 Sn-20
22	17.5	32 Sn-22
25	20.6	38 Sn-25
28	30.6	46 Sn-28
30	32.7	50 Sn-30
32	31.8	50 Sn-32
38	38.1	57 Sn-38