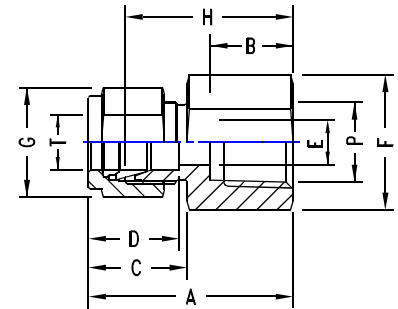


FEMALE CONNECTOR

METRIC OD Tubes x Female NPT Threads

T Tube OD	P NPT Female	A	B	C	D	E min.	F A/F	G A/F	H	TU-LOK Part No.
3	1/8	28.7	10.4	15.3	12.9	2.4	14	11	22.1	SCF 3-2N
3	1/4	33.5	15.0	15.3	12.9	2.4	19	11	26.9	SCF 3-4N
6	1/8	31.3	10.4	17.7	15.3	4.8	14	14	23.9	SCF 6-2N
6	1/4	35.8	15.0	17.7	15.3	4.8	19	14	28.4	SCF 6-4N
6	3/8	37.6	15.0	17.7	15.3	4.8	22	14	30.2	SCF 6-N
6	1/2	42.5	19.8	17.7	15.3	4.8	27	14	35.1	SCF 6-8N
8	1/8	32.1	10.4	18.6	16.2	6.3	14	16	24.6	SCF 8-2N
8	1/4	37.0	15.0	18.6	16.2	6.3	19	16	29.5	SCF 8-4N
8	3/8	38.5	15.0	18.6	16.2	6.3	22	16	31.0	SCF 8-6N
8	1/2	43.3	19.8	18.6	16.2	6.3	27	16	35.8	SCF 8-N
10	1/4	37.8	15.0	19.5	17.2	7.9	19	19	30.2	SCF 10-4N
10	3/8	39.4	15.0	19.5	17.2	7.9	22	19	31.8	SCF 10-6N
10	1/2	44.2	19.8	19.5	17.2	7.9	27	19	36.6	SCF 10-8N
12	1/4	40.3	15.0	22.0	22.8	9.5	22	22	30.2	SCF 12-4N
12	3/8	41.9	15.0	22.0	22.8	9.5	22	22	31.8	SCF 12-6N
12	1/2	46.7	19.8	22.0	22.8	9.5	27	22	36.6	SCF 12-8N
15	1/2	46.7	19.8	22.0	24.4	11.9	27	25	36.6	SCF 15 8N
16	1/2	46.9	19.8	22.0	24.4	12.7	27	25	36.8	SCF 16-8N
20	1/2	47.9	19.8	22.0	26.0	15.9	30	32	37.8	SCF 20-8N
20	3/4	49.7	20.6	22.0	26.0	15.9	35	32	39.6	SCF 20-12N
22	3/4	49.7	20.6	22.0	26.0	18.3	35	32	39.6	SCF 22-12N
22	1	57.9	25.4	22.0	26.0	18.3	41	32	47.8	SCF 22 16N
25	3/4	53.4	20.6	26.5	31.3	21.8	35	38	41.1	SCF 25-12N
25	1	62.3	25.4	26.5	31.3	21.8	41	38	50.0	SCF 25-16N
32	1.1/4	74.6	25.4	41.6	42.0	27.6	55	50	52.6	SCF32-20N
38	1.1/2	83.3	27.6	47.9	49.4	34.0	60	60	56.2	SCF 38-24N



METRIC OD Tubes x Female ISO* Tapered Pipe Threads

T Tube OD	P ISO Female	A	B	C	D	E min.	F A/F	G A/F	H	TU-LOK Part No.
3	1/8	28.7	10.4	15.3	12.9	2.4	14	11	22.1	SCF 3-2Rx
3	1/4	33.5	15.0	15.3	12.9	2.4	19	11	26.9	SCF 3-4Rx
6	1/8	31.3	10.4	17.7	15.3	4.8	14	14	23.9	SCF 6-2Rx
6	1/4	35.8	15.0	17.7	15.3	4.8	19	14	28.4	SCF 6-4Rx
6	3/8	37.6	15.0	17.7	15.3	4.8	22	14	30.2	SCF 6-Rx
6	1/2	42.5	19.8	17.7	15.3	4.8	27	14	35.1	SCF 6-8Rx
8	1/8	32.1	10.4	18.6	16.2	6.3	14	16	24.6	SCF 8-2Rx
8	1/4	37.0	15.0	18.6	16.2	6.3	19	16	29.5	SCF 8-4Rx
8	3/8	38.5	15.0	18.6	16.2	6.3	22	16	31.0	SCF 8-6Rx
8	1/2	43.3	19.8	18.6	16.2	6.3	27	16	35.8	SCF 8-Rx
10	1/4	37.8	15.0	19.5	17.2	7.9	19	19	30.2	SCF 10-4Rx
10	3/8	39.4	15.0	19.5	17.2	7.9	22	19	31.8	SCF 10-6Rx
10	1/2	44.2	19.8	19.5	17.2	7.9	27	19	36.6	SCF 10-8Rx
12	1/4	40.3	15.0	22.0	22.8	9.5	22	22	30.2	SCF 12-4Rx
12	3/8	41.9	15.0	22.0	22.8	9.5	22	22	31.8	SCF 12-6Rx
12	1/2	46.7	19.8	22.0	22.8	9.5	27	22	36.6	SCF 12-8Rx
15	1/2	46.7	19.8	22.0	24.4	11.9	27	25	36.6	SCF 15 8Rx
16	1/2	46.9	19.8	22.0	24.4	12.7	27	25	36.8	SCF 16-8Rx
22	3/4	49.7	20.6	22.0	26.0	18.3	35	32	39.6	SCF 22-12Rx
22	1	57.9	25.4	22.0	26.0	18.3	41	32	47.8	SCF 22-16Rx
25	3/4	53.4	20.6	26.5	31.3	21.8	35	38	41.1	SCF 25-12Rx
25	1	62.3	25.4	26.5	31.3	21.8	41	38	50.0	SCF 25-16Rx
32	1.1/4	74.6	25.4	41.6	42.0	27.6	55	50	52.6	SCF32-20Rx
38	1.1/2	83.3	27.6	47.9	49.4	34.0	60	60	56.2	SCF 38-24Rx

* Reference Specifications : BS 21: ISO 7/1 : JIS B 0203 : DIN 2999 : IS 554

NOTE: The combinations shown above are representative of various possibilities. Other combinations not shown are also available. Please consult us.