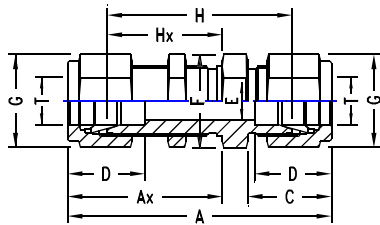


## BULKHEAD UNION

### INCH OD Tubes



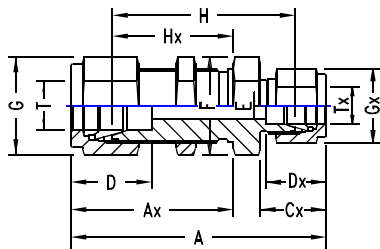
T A OD	Ax	C	D	E min.	F A/F	G A/F	H	Hx	Panel Hole Drill Size	Max. Panel Thick- ness	Tube TU-LOK... Part No.	
1/16	31.5	17.3	11.0	8.6	1.3	11	8	23.8	13.5	5.2	3.0	1 SCB
1/8	51.3	31.2	15.3	12.7	2.4	11	11	38.1	24.6	8.3	12.7	2 SCB
1/4	57.6	33.6	17.8	15.3	4.8	16	14	43.0	26.2	11.5	10.1	4 SCB
5/16	60.7	35.8	18.5	16.3	6.3	17	16	46.0	28.5	13.0	11.1	5 SCB
3/8	62.2	36.8	19.3	7.1	7.1	22	17	47.5	29.5	14.6	11.1	6 SCB
1/2	71.1	41.9	21.8	22.9	10.4	24	22	50.8	31.8	19.5	12.7	8 SCB
5/8	72.6	42.7	21.8	24.4	12.7	27	25	52.3	32.5	22.6	12.7	10 SCB
3/4	79.0	47.5	21.8	24.4	16.0	30	28.5	58.6	37.4	25.8	16.8	12 SCB
1	95.6	57.4	26.4	31.2	22.3	35	38	71.3	45.2	33.7	19.0	16 SCB
1.1/4	123.2	69.9	38.9	41.2	27.6	50	50	79.0	47.7	41.6	19.0	20 SCB
1.1/2	139.2	76.4	45.2	50.0	34.0	60	57	84.8	49.3	49.6	19.0	24 SCB
2	180.4	93.7	62.7	67.6	46.0	70	76	105.6	56.4	67.0	19.0	32 SCB

### METRIC OD Tubes

T .....Tube A OD	Ax	C	D	E min.	F A/F	G A/F	H	Hx	Panel Hole Drill Size	Max. Panel Thick- ness	Max. TU-LOK Part No.	
3	51.3	31.2	15.3	12.9	2.4	14	11	38.1	24.6	8.3	12.7	SCB-3
6	57.7	33.6	17.7	15.3	4.8	16	14	42.9	26.2	11.5	10.2	SCB-6
8	61.0	36.1	18.6	16.2	6.3	17	16	46.0	28.6	13.1	11.2	SCB-8
10	63.7	37.0	19.5	17.2	7.9	22	19	48.5	29.4	16.3	11.2	SCB-10
12	71.0	41.9	22.0	22.8	9.5	24	22	50.8	31.8	19.5	12.7	SCB-12
14	72.5	42.6	22.0	24.4	11.1	27	25	52.3	32.5	22.5	12.7	SCB-14
15	72.5	42.6	22.0	24.4	11.9	27	25	52.3	32.5	22.8	12.7	SCB-15
16	72.5	42.6	22.0	24.4	12.7	27	25	52.3	32.5	22.8	12.7	SCB-16
18	78.9	47.4	22.0	24.4	15.1	30	30	58.7	37.3	26.0	16.8	SCB-18
20	84.5	53.0	22.0	26.0	15.8	35	32	64.3	42.9	29.0	19.0	SCB-20
25	95.6	57.4	26.4	31.2	22.3	35	38	71.3	45.2	33.7	19.0	SCB-25
30	123.7	70.2	39.2	39.6	26.2	50	46	80.5	48.6	40.5	19.0	SCB-30
32	128.3	72.5	41.6	42.0	27.6	50	50	82.3	49.5	42.5	19.0	SCB-32
38	144.6	79.1	47.9	49.4	33.7	60	57	89.4	51.5	50.5	19.0	SCB-38

## BULKHEAD REDUCING UNION

### INCH OD Tubes



T Tube OD	T Tube OD	A	Ax	Cx	D	Dx	E min.	F A/F	G A/F	Gx A/F	H	Hx	Panel Hole Drill Size	Max. Panel Thick- ness	..... TU-LOK.. Part No.
1/4	1/8	55.2	33.5	15.3	15.3	12.7	2.4	16	14	11	41.2	26.2	11.5	10.2	4-2 SCRB
3/8	1/4	60.7	36.6	17.8	16.8	15.3	4.8	22	17	14	46.0	29.5	14.6	11.2	6-4 SCRB
1/2	1/4	66.8	41.9	17.8	22.4	15.3	4.8	24	22	14	49.2	31.8	19.5	12.7	8-4 SCRB
1/2	3/8	66.8	41.9	17.8	22.4	16.8	7.1	24	22	17	49.2	31.8	19.5	12.7	8-6 SCRB

### METRIC OD Tubes

T Tube OD	T Tube OD	A	Ax	Cx	D	Dx	E min.	F A/F	G A/F	Gx A/F	H	Hx	Panel Hole Drill Size	Max. Panel Thick- ness	..... TU-LOK.. Part No.
6	3	56.0	33.6	17.7	15.3	12.9	2.4	16	14	11	41.2	26.2	11.5	10.2	SCRB-6-3
8	6	61.0	36.1	18.6	16.2	15.3	4.8	17	16	14	48.0	28.6	13.1	11.2	SCRB-8-6
10	6	63.7	37.0	19.5	17.2	15.3	4.8	22	19	14	48.5	29.4	16.3	11.2	SCRB-10-6
12	6	71.0	41.9	22.0	22.8	15.3	4.8	24	22	14	50.8	31.8	19.5	12.7	SCRB-12-6
12	10	71.0	41.9	22.0	22.8	17.2	7.9	24	22	17	50.8	31.8	19.5	12.7	SCRB-12-10

**NOTE:** The combinations shown above are representative of various possibilities. Other combinations not shown are also available. Please consult us.