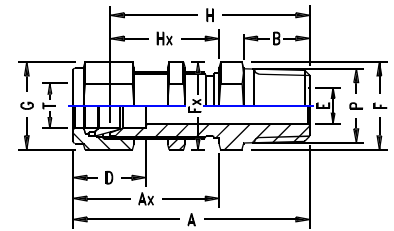


BULKHEAD MALE CONNECTOR

INCH OD Tubes x Male NPT Threads

T Tube OD	P NPT Male	A	Ax	B	D	E min.	F A/F	G A/F	H	Hx	Panel Hole Drill Size	Max. Panel Thick- ness	TU-LOK Part No.
1/8	1/8	46.4	31.2	9.6	12.7	2.4	14	11	39.8	24.6	8.3	12.7	2 SCMB-N
1/4	1/8	49.5	33.5	9.6	15.3	4.8	16	14	42.2	26.2	11.5	10.2	4-2 SCMB-N
1/4	1/4	54.1	33.5	14.3	15.3	4.8	16	14	46.7	26.2	11.5	10.2	4 SCMB-N
3/8	1/4	57.4	36.8	14.3	16.8	7.1	19	17	50.0	29.5	14.7	11.2	6-4 SCMB-N
3/8	3/8	57.4	36.8	14.3	16.8	7.1	19	17	50.0	29.5	14.7	11.2	6 SCMB-N
3/8	1/2	63.7	36.8	19.1	16.8	7.1	22	17	56.5	29.5	14.7	11.2	6-8 SCMB-N
1/2	3/8	63.3	41.9	14.3	22.9	9.6	24	22	53.0	31.8	19.5	12.7	8-6 SCMB-N
1/2	1/2	68.8	41.9	19.1	22.9	10.4	24	22	58.8	31.8	19.5	12.7	8 SCMB-N
3/4	3/4	76.2	47.5	19.1	24.4	15.8	30	28.5	66.9	37.4	25.8	16.8	12 SCMB-N
1	1	93.2	57.4	23.9	31.2	22.3	41	38	81.0	45.2	33.7	19.0	16 SCMB-N
1.1/4	1.1/4	110.5	72.5	23.9	41.2	27.6	50	50	87.5	49.5	42.5	19.0	20 SCMB-N
1.1/2	1.1/2	122.8	79.1	26.2	50.0	34.0	60	57	95.5	51.5	50.5	19.0	24 SCMB-N



METRIC OD Tubes x Male NPT Threads

T Tube OD	P NPT Male	A	Ax	B	D	E min.	F A/F	G A/F	H	Hx	Panel Hole Drill Size	Max. Panel Thick- ness	TU-LOK Part No.
3	1/8	46.4	31.2	9.6	12.9	2.4	11	11	39.8	24.6	8.3	12.7	SCMB 3-2N
6	1/8	49.5	33.5	9.6	15.3	4.8	16	14	42.2	26.2	11.5	10.2	SCMB 6-2N
10	1/4	57.4	36.8	14.3	17.2	7.1	19	17	50.0	29.5	14.7	11.2	SCMB 10-4N
10	3/8	57.4	36.8	14.3	17.2	7.1	19	17	50.0	29.5	14.7	11.2	SCMB 10-4N
12	3/8	63.3	41.9	14.3	22.0	9.6	24	22	53.0	31.8	19.5	12.7	SCMB 12-6N
12	1/2	68.8	41.9	19.1	22.0	10.4	24	22	58.8	31.8	19.5	12.7	SCMB 12-8N
16	1/2	69.6	42.6	19.1	24.4	11.9	27	25	59.5	32.5	22.8	12.7	SCMB 16-8N
22	3/4	83.3	53.0	19.1	26.0	15.8	35	25	73.2	42.9	29.0	19.0	SCMB 22-12N
25	1	93.2	57.4	23.9	31.3	22.3	41	38	81.0	45.2	33.7	19.0	SCMB 25-16N
32	1.1/4	110.5	72.5	23.9	42.0	28.6	50	50	87.5	49.5	42.5	19.0	SCMB 32-20N
38	1.1/2	122.8	79.1	26.2	49.4	33.7	60	57	95.5	51.5	50.5	19.0	SCMB 38-24N

NOTE: Bulkhead Male Connectors are also available with ISO Taper Male Threads, ISO Parallel Male Threads, ISO Parallel Male Threads - RP and RS and UNEF Threads. Please consult us for details.