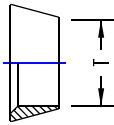


## FRONT FERRULE

### INCH OD Tubes



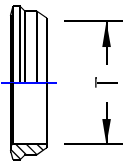
T No.	TU-LOK
1/16	1 ff
1/8	2 ff
1/4	4 ff
5/16	5 ff
3/8	6 ff
1/2	8 ff
5/8	10 ff
3/4	12 ff
7/8	14 ff
1	16 ff
1.1/4	20 ff
1.1/2	24 ff
2	32 ff

### METRIC OD Tubes

T Tube OD	Tube Part Part No.
3	ff-3
6	ff-6
8	ff-8
10	ff-10
12	ff-12
14	ff-14
15	ff-15
16	ff-16
18	ff-18
20	ff-20
22	ff-22
25	ff-25
28	ff-28
30	ff-30
32	ff-32
38	ff-38

## BACK FERRULE

### INCH OD Tubes



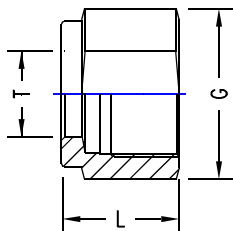
T Tube No.	TU-LOK
1/16	1 fb
1/8	2 fb
1/4	4 fb
5/16	5 fb
3/8	6 fb
1/2	8 fb
5/8	10 fb
3/4	12 fb
7/8	14 fb
1	16 fb
1.1/4	20 fb
1.1/2	24 fb
2	32 fb

### METRIC OD Tubes

T OD	Tube Part Part No.
3	fb-3
6	fb-6
8	fb-8
10	fb-10
12	fb-12
14	fb-14
15	fb-15
16	fb-16
18	fb-18
20	fb-20
22	fb-22
25	fb-25
28	fb-28
30	fb-30
32	fb-32
38	fb-38

## COUPLING CAP

### INCH OD Tubes



OD	A/F	Part No.	
1/16	8.0	8	1 Sn
1/8	12.0	11	2 Sn
1/4	12.7	14	4 Sn
5/16	14.0	16	5 Sn
3/8	14.5	17	6 Sn
1/2	17.5	22	8 Sn
5/8	17.5	25	10 Sn
3/4	17.5	28.5	12 Sn
7/8	17.5	32	14 Sn
1	20.6	38	16 Sn
1.1/4	31.8	50	20 Sn
1.1/2	38.0	57	24 Sn
2	52.5	76	32 Sn

### METRIC OD tubes

T

OD	A/F	Part No.	
3	12.0	11	Sn-3
6	12.7	14	Sn-6
8	13.5	16	Sn-8
10	15.1	19	Sn-10
12	17.5	22	Sn-12
14	17.5	25	Sn-14
15	17.5	25	Sn-15
16	17.5	25	Sn-16
18	17.5	30	Sn-18
20	17.5	32	Sn-20
22	17.5	32	Sn-22
25	20.6	38	Sn-25
28	30.6	46	Sn-28
30	32.7	50	Sn-30
32	31.8	50	Sn-32
38	38.1	57	Sn-38