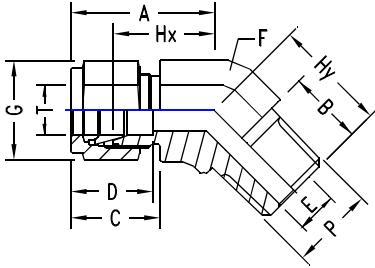


45 DEG. MALE ELBOW

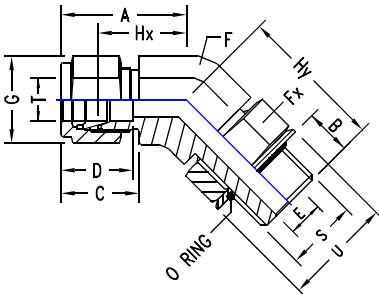
INCH OD Tubes x Male NPT Threads



T Tube OD	P NPT Male	A	B	C	D	E min.	F A/F	G A/F	Hx	Hy	TU-LOK Part	No.
1/4	1/8	24.6	9.6	17.8	15.3	4.8	14	14	17.3	16.5	4-2 SEM/45-N	
1/4	1/4	24.6	14.3	17.8	15.3	4.8	14	14	17.3	21.0	4 SEM/45-N	
3/8	1/8	27.9	9.6	19.3	16.8	4.8	14	17	20.6	18.3	6-2 SEM/45-N	
3/8	1/4	27.9	14.3	19.3	16.8	7.1	17	17	20.6	22.9	6-4 SEM/45-N	
3/8	3/8	29.2	14.3	19.3	16.8	7.1	19	17	21.8	24.1	6 SEM/45-N	
1/2	3/8	32.0	14.3	21.8	22.9	9.6	22	22	21.8	24.1	8-6 SEM/45-N	
1/2	1/2	32.0	19.1	21.8	22.9	10.4	22	22	21.8	29.0	8 SEM/45-N	
3/4	3/4	34.0	19.1	21.8	24.4	15.8	27	28.5	23.9	31.8	12 SEM/45-N	
1	1	40.4	23.8	26.4	31.2	22.3	35	38	26.2	37.8	16 SEM/45-N	

45 DEG. POSITIONABLE MALE ELBOW

INCH OD Tube x SAE/MS Straight Threads



T Tube OD	P SAE/MS Male	A	B	C	D	E min.	F	Fx A/F	G A/F	Hx A/F	Hy	U	O Ring Part No.	TU-LOK Part No.
1/4	7/16-20	25.7	9.9	17.8	15.3	4.8	14	14	14	18.3	25.6	16.5	4 OPU	4 SEsw/45-U
3/8	9/16-18	27.9	11.2	19.3	16.8	7.1	16	17	17	20.6	28.2	20.0	6 OPU	6 SEsw/45-U
1/2	3/4-16	32.0	12.7	21.8	22.9	10.4	22	22	22	21.8	32.3	25.7	8 OPU	8 SEsw/45-U
3/4	11/16-12	39.9	16.8	21.8	24.4	15.8	27	32	28.5	29.7	47.3	36.6	12 OPU	12 SEsw/45-U
1	15/16-12	47.5	16.8	26.4	31.2	19.8	35	38	38	35.3	50.6	44.0	16 OPU	16 SEsw/45-U

* Reference Specifications : SAE Screw Thread standard conforms to American standard B1.1. Unified screw threads.

INCH OD Tube x Male ISO* Parallel Threads

T Tube OD	P ISO Male	A	B	C	D	E min.	F	Fx A/F	G A/F	Hx A/F	Hy	U	O Ring Part No.	TU-LOK Part No.
1/4	1/4	25.7	9.9	17.8	15.3	4.8	14	14	14	18.3	25.6	16.5	4 OPU	4 SEsw/45-R
3/8	3/8	27.9	11.2	19.3	16.8	7.1	16	17	17	20.6	28.2	20.0	6 OPU	6 SEsw/45-R
1/2	1/2	32.0	12.7	21.8	22.9	10.4	22	22	22	21.8	32.3	25.7	8 OPU	8 SEsw/45-R
3/4	3/4	39.9	16.8	21.8	24.4	15.8	27	32	28.5	29.7	47.3	36.6	12 OPU	12 SEsw/45-R
1	1	47.5	16.8	26.4	31.2	19.8	35	38	38	35.3	50.6	44.0	16 OPU	16 SEsw/45-R

* Reference Specifications : BS 2779 : ISO 228/1 : JIS B0202 : DIN-ISO 228/1